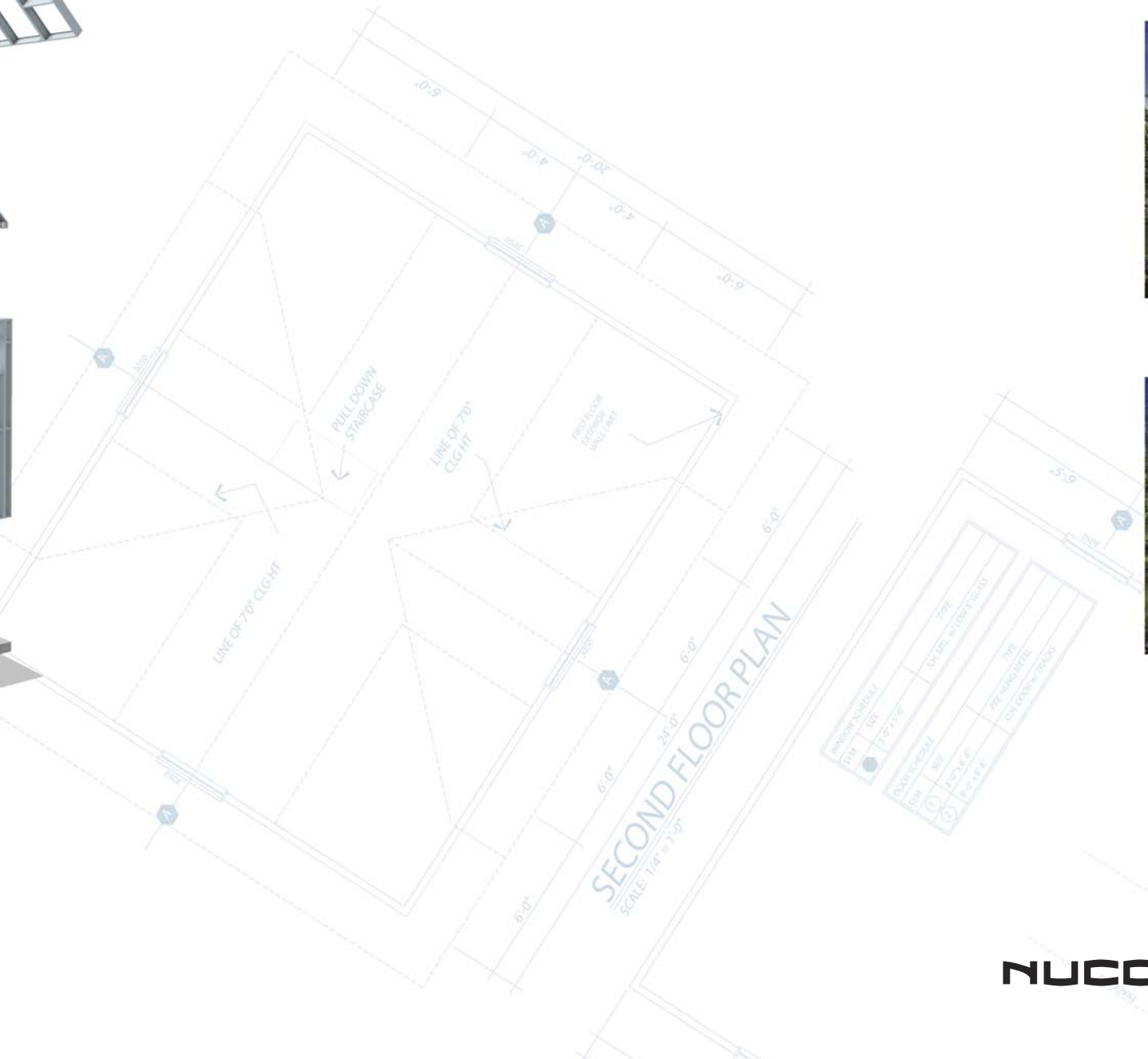
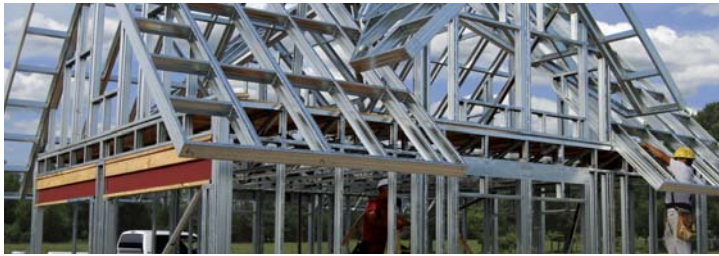


the **NU** way to build.



Become part of **NUCONSTEEL'S®**
 Automated Framing Systems Network.
 Call 1-866-873-4832 or visit nuconsteel.com today.



NUGARAGE™

GULF COAST SERIES

NUCONSTEEL® introduces **NUGARAGE Gulf Coast Series**. Designed as an economical detached structure strong enough to protect a homeowner's automobile and belongings. These one and a half story garage packages are a beautiful solution for those in need of extra storage, car space, or a spacious workshop.



These one and a half story garage packages are a beautiful solution for those in need of extra storage, car space, or a spacious workshop.

The **NUGARAGE** suite of products

combine state-of-the-art design, engineering and layout software with rock-solid steel profiles.

NUCONSTEEL has performed all the extensive engineering required to simplify and minimize the amount of steel and labor needed to adequately frame each model and pass or exceed code requirements. With the extra wind load requirements of some areas in the Gulf Coast region these **NUGARAGE** models come standard with either 110 mph or 150 mph wind loads.

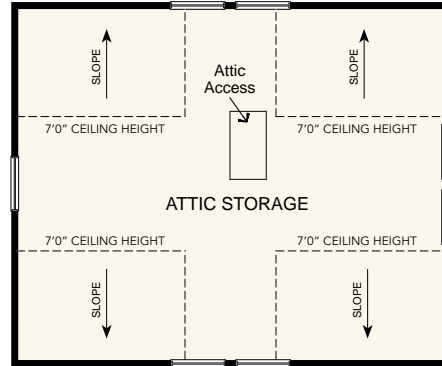


NUGARAGE, the constructive green choice. 

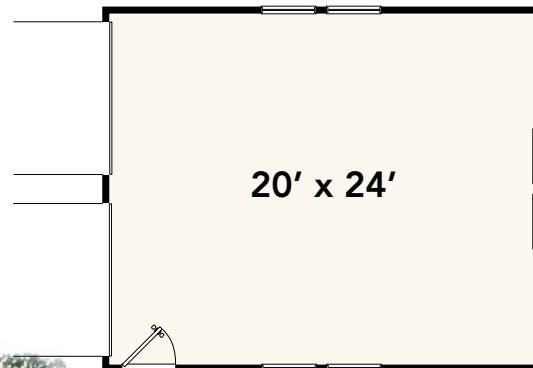
NG2024P8GE

960 SQ.FT.

- | | |
|--|--|
| First Floor (480 sqft)
<ul style="list-style-type: none"> • 2 Garage Doors (8'W) • 1 Walkdoor • 6 Windows | Attic Storage (480 sqft)
<ul style="list-style-type: none"> • 7 Windows • Space for pulldown staircase |
|--|--|



Attic: Rated 20lb psf - storage only

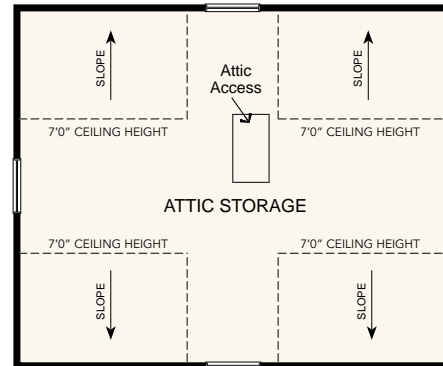


150 mph Wind Load Version Window & Door Placement

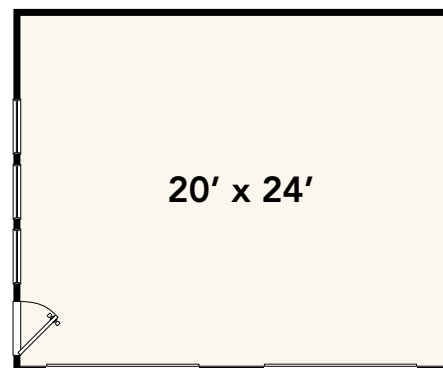
NG2420P8GE

960 SQ.FT.

- | | |
|--|--|
| First Floor (480 sqft)
<ul style="list-style-type: none"> • 2 Garage Doors (8'W) • 1 Walkdoor • 6 Windows | Attic Storage (480 sqft)
<ul style="list-style-type: none"> • 4 Windows • Space for pulldown staircase |
|--|--|



Attic: Rated 20lb psf - storage only

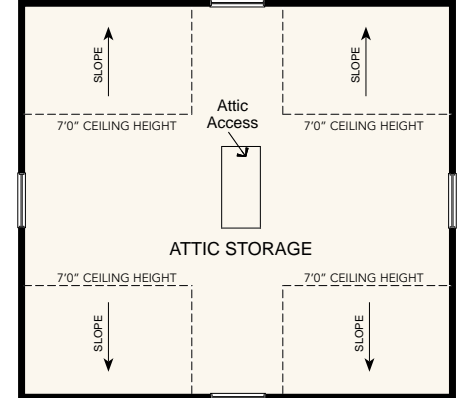


150 mph Wind Load Version Window & Door Placement

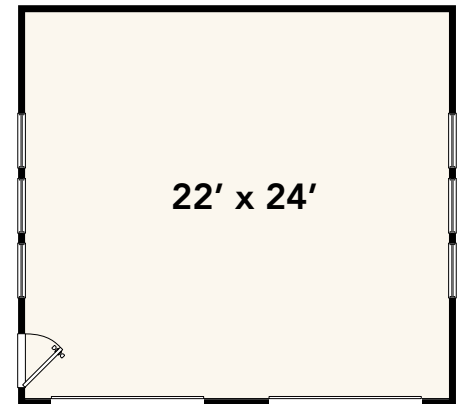
NG2422P8GE

1056 SQ.FT.

- | | |
|--|--|
| First Floor (528 sqft)
<ul style="list-style-type: none"> • 2 Garage Doors (8'W) • 1 Walkdoor • 6 Windows | Attic Storage (528 sqft)
<ul style="list-style-type: none"> • 4 Windows • Space for pulldown staircase |
|--|--|



Attic: Rated 20lb psf - storage only



150 mph Wind Load Version Window & Door Placement

NOTE: All measurements are approximate. Renderings are artist conceptions and may vary from actual plans. NUCONSTEEL reserves the right to modify and update plans without notice.

The NU Way to Build!