

NUFRAME[®]
A NUCONSTEEL PRODUCT



NUCONSTEEL[®]
A NUCOR COMPANY

525 South Locust Street
Denton, Texas 76201
940.891.3050
fax: 940.891.3090
toll free: 866.873.4832

NUCONSTEEL.COM

NUCONSTEEL[®]
A NUCOR COMPANY



NUFROME®

THE POWER TO SUCCEED

The fastest, most economical integrated system ever developed for fabricating walls for residential and light commercial projects.



The Complete PANEL SYSTEM

A total solution of light gauge steel panelized construction from a company you can trust – NUCONSTEEL. The NUFROME system integrates all the components you need to produce high quality, cost-effective panels – walls, ceilings and roofs – for the residential and light commercial marketplace.

The NUFROME system combines a roll forming machine and decoiler, integrated software and extensive training with high quality slit steel coils into one simple to operate, easy to maintain, powerful system. This system doesn't require jigs, measuring, cutting, layout, stock length inventory, or wall tables giving you the ability to produce perfect steel panels – on time, every time.

You can set up your panel production with dedicated NUFROME 735 (3.5" profile) and 755 (5.5" profile) roll formers or the BRAND NEW Series 800 Combo machine (3.5", 5.5" & 6" profiles). Each provides the flexibility to produce a wide variety of residential and light commercial panel projects.

NUFROME Panels: Economical and Fast

- Completely automated, roll forming production system
- Single stud and track profile
- From coil to finished panel in one step
- Reduced construction time
- Reduced installation costs
- No cutting, measuring, inventory or layout tables
- Virtually no scrap or waste
- Intuitive fully integrated Design and Layout software
- Compatible with other building systems



BUILT ON A SOLID FOUNDATION

The inherent benefits of steel framing, combined with the support of an industry leader and the strength of one of America's largest steel producers.



Start With THE BEST STEEL

The quality of your finished product depends on the quality of your raw material. NUCONSTEEL – a wholly owned subsidiary of NUCOR – offers high quality galvanized slit coils specifically for NUFROME customers. Nucor has been considered 'best in class' among steel producers for many years. Now that quality can be delivered directly to you! Produced from recycled material, NUCOR steel is environmentally friendly too. NUCONSTEEL customers receive preferred pricing and availability.



Build Your Panels With THE BEST SYSTEM

The NUFROME System effectively takes you through the whole process, start to finish, with one efficient package.

Intuitive Panel Design Software

- Simple, logical set-up and layout
- Customizable default settings
- Design in 2D and 3D views
- Print Shop Drawings with your logo
- Send digitally to NUFROME roll formers

Automated Roll Formers

- A single profile produces each panel
- Easy set-up and maintenance
- Electric and plumbing service punch
- Lockable casters for great mobility

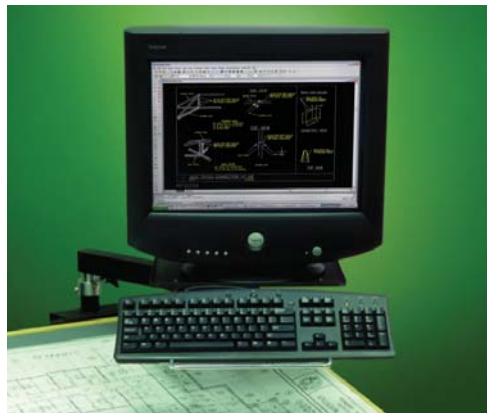
Just-In-Time Panel Production

- Pre-punched for jigless assembly
- Quick, strong rivet connections

Comprehensive Training and Support

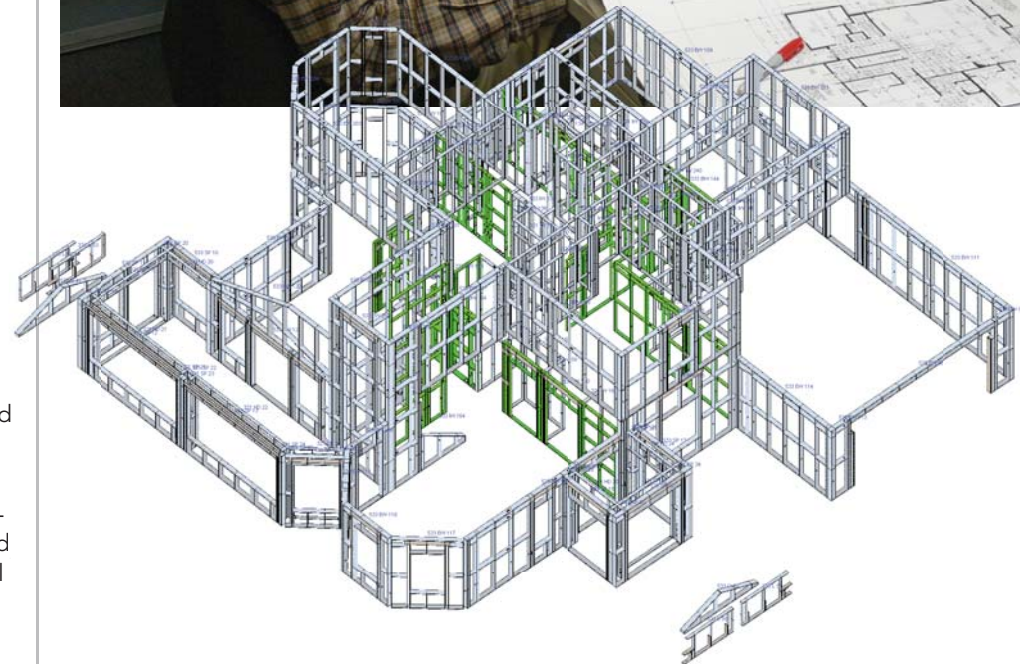
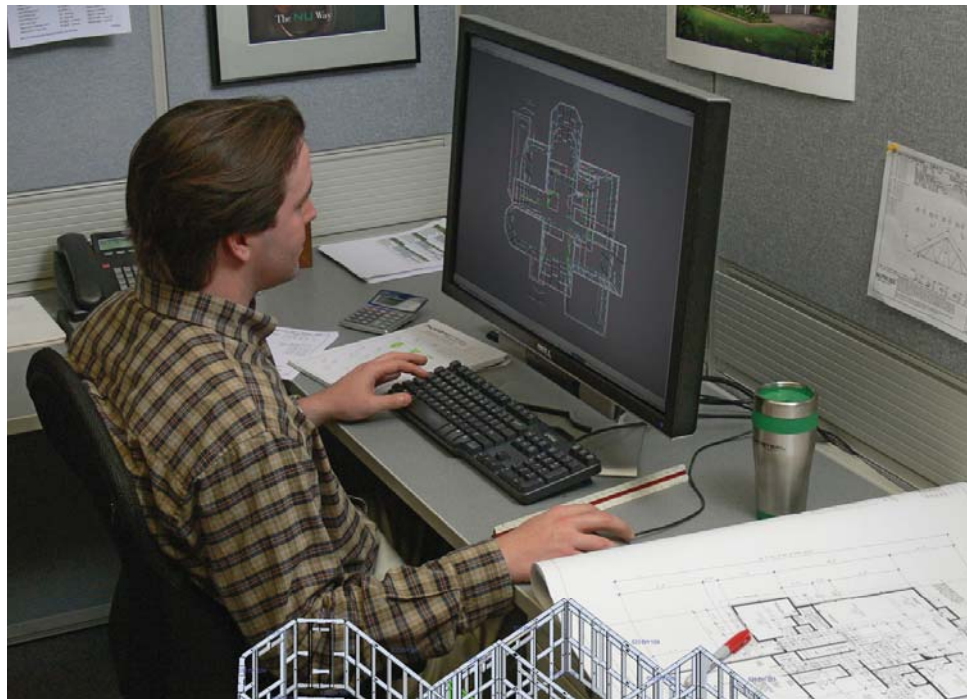
- Software Training and Manuals
- Fabrication Training and Manuals
- Experienced Personal Support Team
- Fabricator Resource Website





INTEGRATED SOFTWARE SYSTEM

The intuitive wall panel design, layout and production software dramatically reduces the entire fabrication process.



State-of-the-Art WALL SOFTWARE

Design/Layout Software – the heart of the NUFROME system – is the industry leading design software used to interpret architectural designs into wall panel layouts. Powerful, flexible, and comprehensive, the design software is capable of designing virtually any configuration in steel that can be produced in wood. With a seamless transfer of geometry to the Roll Former software, the package is unbeatable in the industry.

A true 3D design tool, the software allows you to see exactly what you are designing, and will optimize each panel to ensure a cost-effective product. Developed with the designer in mind, default settings handle most specific variables. Each component is defined by a set of properties which allows you to quickly and accurately develop a model – built the way you want it. Intuitive and easy to learn, you will appreciate how items are linked together so that one adjustment means everything else still fits. Complicated designs are handled quickly and accurately without complicated input.

The **Roll Former Production Software** is the bridge between the Design software and the NUFROME 735, 755 and 800 Roll Formers. Completely intuitive, the RF Software will have you producing steel panels in minutes.

While it may be simple in design, it isn't lacking flexibility. Every aspect of machine control is configurable using default settings. Even the most complex wall geometry will be converted instantly and accurately. The screen provides a clear image of the panel currently being produced and the order each piece has been run, ensuring non-stop assembly.

Advanced features such as real time hydraulic operation counters and even user defined frame order puts the software in a league all by itself.



FROM COIL TO ASSEMBLED PANELS

This synergistic system eliminates random length inventory, material sorting, measuring, cutting, jigging, coping, punching and additional labor.



The Series 700 & 800 ROLL FORMERS

The NUFROME 735, 755 and 800 Roll Formers are the strength of the NUFROME System. Input data transferred directly from the Design Software automatically provides all the intelligence the roll former needs to produce assembly ready panels. The computer controlled, servo driven machine precisely rolls out the stud profile through seven progressive stations.

Once the steel exits the roll cage and enters the tool head, the full power and value of the roll former is realized. Seven separate hydraulic functions – cut to length, web notch, swage, squash, rivet punch, electric service punch and plumbing service punch – work together to produce components completely ready for assembly. Technology refined to eliminate the need for any additional cutting, measuring or even layout!

Think that's impressive? There's more! Using some of the most advanced components available, all this is packaged in an easy to operate, simple to adjust, low maintenance machine. Built on a rugged frame, the roll former is at home in a high volume fabrication plant or on a job site – you make the choice.

Powered Automatic Decoiler

The NUFROME 735, 755 and 800 Roll Formers wouldn't be complete without a matching decoiler. Sized to work in step with the roll former, the decoiler is a mobile, easy to load device. Simply straddle the coil with the decoiler and the spool moves easily into the coil center. Expand the centering spool, lift the coil off the floor with the self-contained hydraulic system and position the decoiler. Thread the steel into the roll former and you're ready.



3 1/2" NUFROME 735 RF
3 1/2" Profile

5 1/2" NUFROME 755 RF
5 1/2" Profile

3 1/2" 5 1/2" 6" NUFROME 800 RF
Combo Machine
3 1/2", 5 1/2" & 6"
Profiles



Start Quickly with our TRAINING & SUPPORT

NUCONSTEEL training programs and resources can help you get your wall production running quickly and smoothly. Our courses feature hands-on tasks and real-world scenarios – in just a matter of days, you'll be able to embrace our steel fabrication standards and be more productive. Our comprehensive training program included with every NUFRAME system provides efficient instructional training along with quality practical tutorials designed to get you up to speed quickly.

Our innovative training facility in Denton, Texas provides a quality learning atmosphere without interruptions, utilizing up-to-date, high speed equipment to maximize the learning experience. Limited class size guarantees the attention required can be provided to each individual.

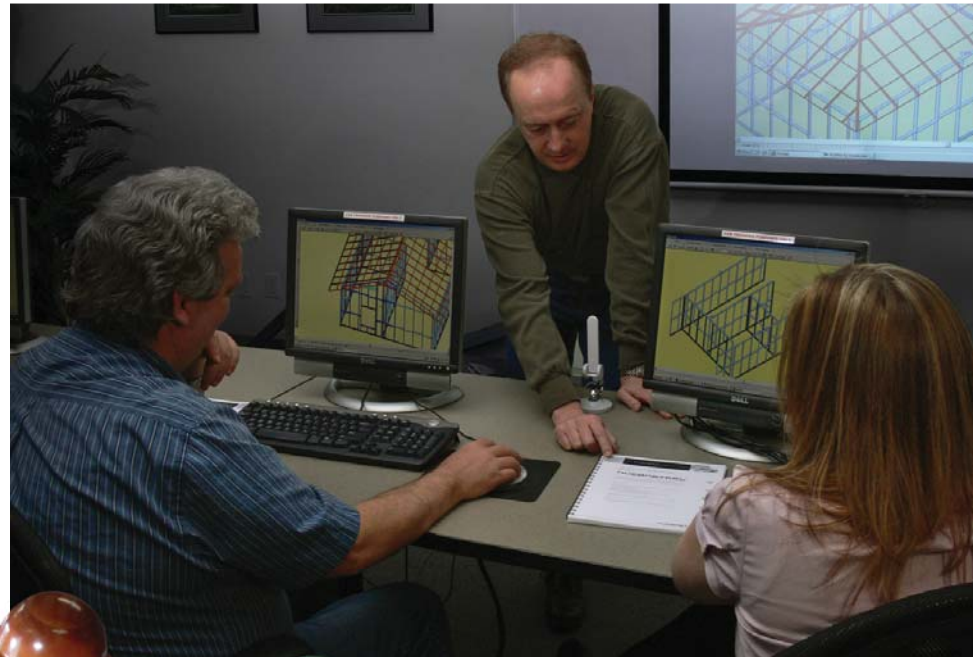
The 4-day intensive training program covers all aspects of the Panel Layout Software and highlights the Roll Former Production Software. Machine operators also receive four days of hands-on training at our manufacturing facility. An additional day of Machine Commissioning and Roll Former Production Software training is completed in your facility to ensure that everyone involved in your business has the knowledge needed to be successful.

Still need help? Our highly experienced software support team is just a phone call away. Just dial our toll free number for instant design assistance.



COMPREHENSIVE SUPPORT

Building strong relationships on mutual trust and support is the most important factor in the NUCONSTEEL strategy for success.



NU SOLUTIONS
THE NU WAY TO BUILD

BUILDING STEEL PANELS IS SIMPLE!

Making sure the entire process, from start to finish, works together as an efficient and cost effective package is what NUCONSTEEL provides.



Get the Ultimate BUILDING SOLUTION

NUCONSTEEL is pioneering a new technology of framing based on its innovative NUSOLUTIONS – a knowledge-oriented and solutions-based approach to building that enables us to go beyond our suite of light gauge structural steel products to offer total solutions that are flexible, cost-effective and compatible. This means our trusses, wall panels and complimentary products are engineered to work with one another as a complete solution. Our products are also compatible with other products in the market, providing the industry with unprecedented flexibility and choice.

Companion Products and Programs

NUCONSTEEL can provide a range of innovative light gauge steel structural products and accessories for residential and commercial construction.

NUTRUSS 2.0 & 3.0
Advanced light gauge steel truss systems

NUJOIST
Structural steel floor joist system

VULCRAFT Products
Steel joists, joist girders and steel deck

NUCOR Building Systems
Metal Buildings and components

Simpson Strong-Tie
Cold-formed steel connectors

Aerosmith Fastening Systems
Pneumatic tools and hardened steel pins



NUPRODUCTS
Pre-Designed
Stock Plans

Engineered Standard Model Plans for Homes, Garages, Buildings, Sheds, Horse Barns, and Storm Shelters