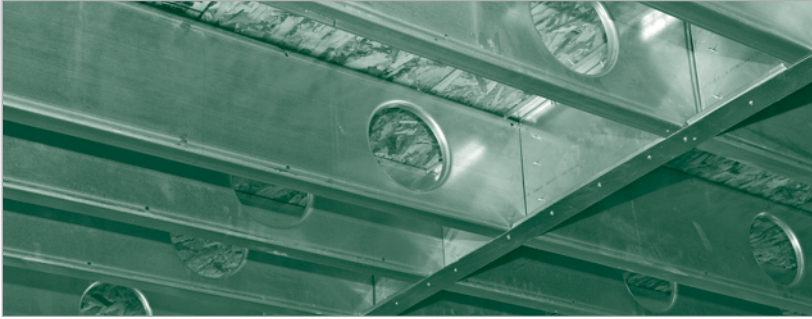


NUJOIST from Nuconsteel is a cost effective Cold-Formed Steel (CFS) proprietary floor joist system ideally suited for the commercial and residential construction markets. NUJOIST combines the strength and consistency of a standard C-Shaped joist with the flexibility of pre-punched, reinforced access holes to greatly improve system installation time and architectural flexibility. Plumbing, HVAC, electrical and other technology services can be installed within the floor system improving ease of installation while maintaining structural integrity.



NUCONSTEEL
A NUCOR COMPANY

THE NUJOIST® FLOOR JOIST SYSTEM

by NUCONSTEEL

MATERIAL AND FINISHES

- Section properties calculated in accordance with the AISI "North American Specification for the Design of Cold-Formed Steel Structural Members" 2001 Edition with 2004 Supplement.
- Steel shall conform to ASTM A653 Grade 55 or ASTM A1003 Structural Grade.
- Steel shall be galvanized in accordance with ASTM A924 with a G60 standard galvanized coating. For coastal areas and highly corrosive environments, a G90 galvanized coating is available.
- Steel material minimum yield is 33,000 psi for a material thickness of 43 mil.
- Steel material minimum yield is 50,000 psi for a material thickness of 54 mil and greater.
- NUJOIST is available in stock lengths and cut-to-length.

UL FIRE RATED ASSEMBLIES

G569	Fortacrete subfloor (with or without topping), direct applied or suspended single layer gypsum board ceiling.	1-1/2, 2 hour
G570	Fortacrete subfloor, direct applied or suspended double layer gypsum board ceiling.	2 hour
G571	Levelrock, direct applied or suspended single layer gypsum board ceiling.	2 hour
L599	Plywood subfloor (with or without topping), suspended or direct applied double layer gypsum ceiling.	1-1/2 hour

SOUND RATINGS

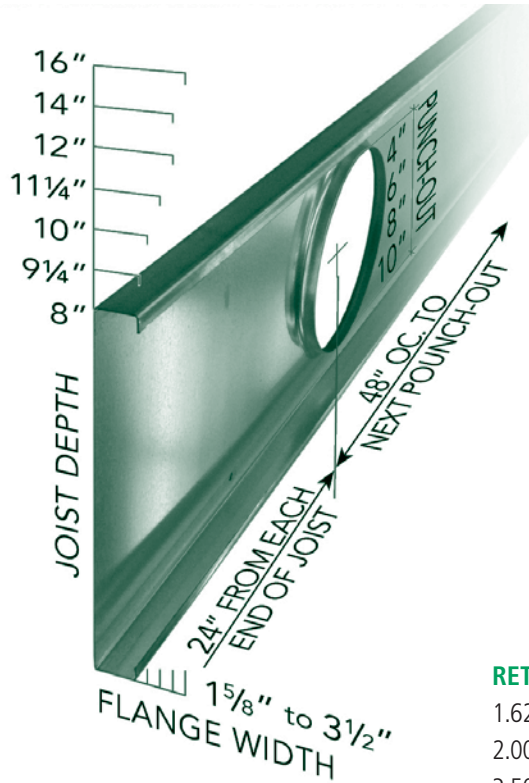
For NUJOIST sound ratings visit: www.nuconsteel.com

DESIGN ADVANTAGES

- Architectural flexibility
- High strength-to-weight ratio
- Non-combustible
- Environmentally friendly
- Performance
- Coordinates easily with MEP requirements

CONSTRUCTION PERFORMANCE/ADVANTAGES

- Dimensionally stable – won't expand, contract, warp or crack
- Up to 10" diameter stiffened web punch-outs
- Integrates easily with other building construction materials
- Wide selection of sizes for many applications and long span conditions



RETURN LIP SIZE:

- 1.62" Flange = 1/2" Lip
- 2.00", 2.50", 3.00" Flange = 5/8" Lip
- 3.50" Flange = 1" Lip

PROFILE SPECIFICATIONS

Depth	Flange Width (in)	Hole Size	Thickness (mils)
8"	1.62 - 2.00 - 2.50 - 3.00	4"	43 - 54 - 68 - 97
9 1/4"	1.62 - 2.00 - 2.50 - 3.00	4"	54 - 68 - 97
10"	1.62 - 2.00 - 2.50 - 3.00	6"	54 - 68 - 97
11 1/4"	1.62 - 2.00 - 2.50 - 3.00	6"	54 - 68 - 97
12"	1.62 - 2.00 - 2.50 - 3.00	8"	54 - 68 - 97
14"	1.62 - 2.00 - 2.50 - 3.00 - 3.50	10"	54 - 68 - 97
16"	1.62 - 2.00 - 2.50 - 3.00 - 3.50	10"	68 - 97

NUJOIST PRODUCT DESIGNATOR

- Example: 1000NJ200-43
- 1000 = Member depth in 1/100"
 - NJ = Product designation
 - 200 = Joist flange width in 1/100"
 - 43 = Material thickness in mils



Environmental Data
 NUJOIST uses recycled steel products from Nucor, America's largest recycler, and is 100% recyclable.

