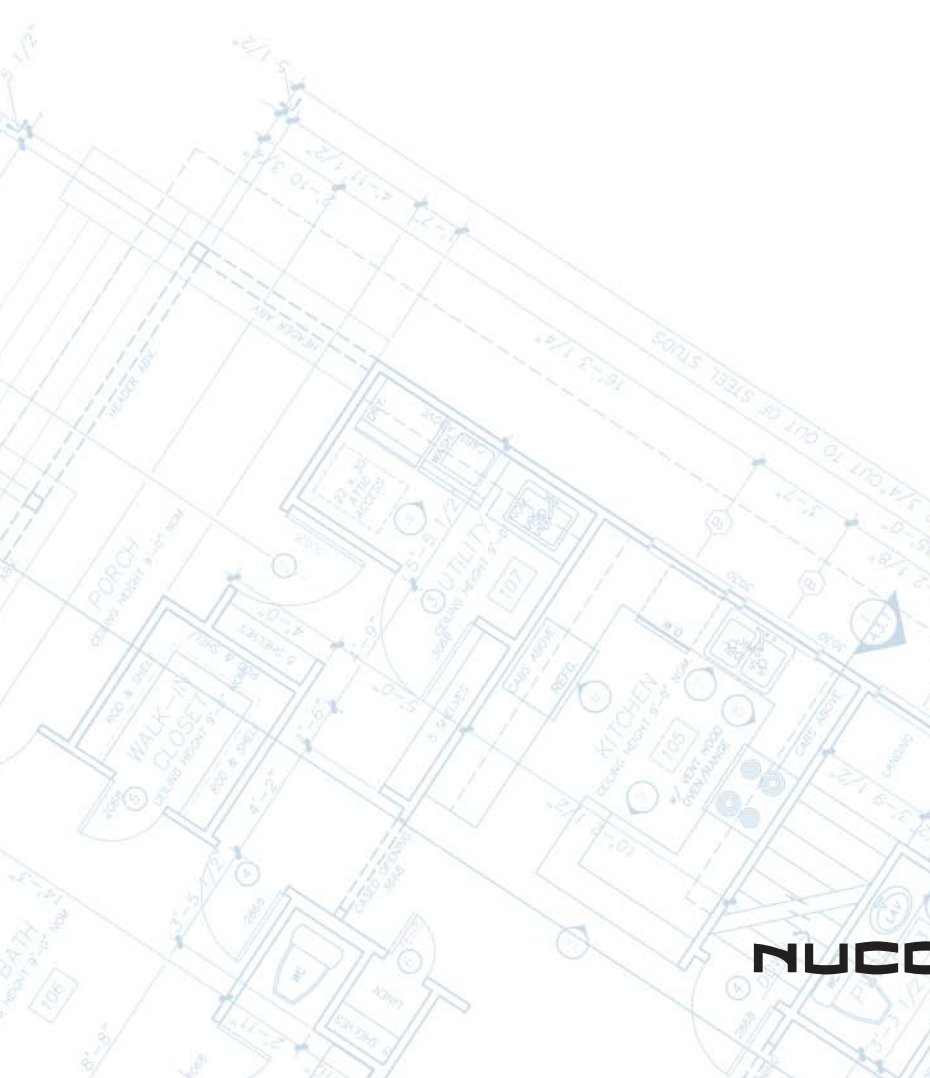


NUSHELTER®

GULF COAST SERIES



NUCONSTEEL®
A NUCOR COMPANY



NUSHELTER®

GULF COAST SERIES

Regionally Sensitive Design. The timeless heritage of the south finds expression in these homes that are strong enough to withstand unstable Gulf Coast weather.



From their traditional Gulf Coast origins to their advanced steel frame engineering these homes are designed to make you feel right at home. With a classical emphasis on large country

porches, these homes graciously welcome visitors and passers-by with old-fashioned southern hospitality.

The healthy blend of strength and charm has always been the cornerstone of the Gulf Coast culture. Now you can build on the best that both worlds have to offer.



NUSHELTER, *the constructive green choice.*



The NU Way to Build!

NS3254

3 BEDROOM
2 BATH
COUNTRY PORCH

Living 1188 sqft
Front Porch 218 sqft
TOTAL 1406 sqft



NS5544

3 BEDROOM
2 1/2 BATH
COUNTRY PORCH

Living 1468 sqft
Front Porch 380 sqft
Side Porch 56 sqft
TOTAL 1904 sqft



NOTE: All measurements are approximate. Renderings are artist conceptions and may vary from actual plans. NUCONSTEEL reserves the right to modify and update plans without notice.

NS3252

2 BEDROOM
1 1/2 BATH
COVERED PORCH

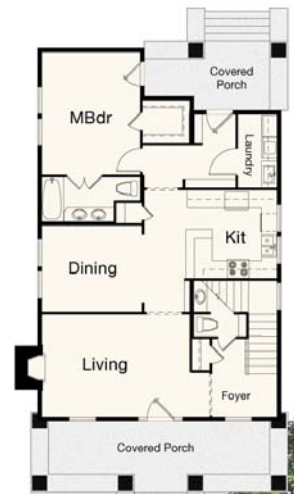
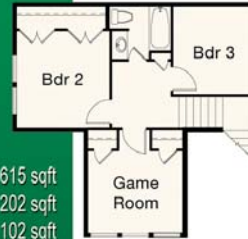
Living 1056 sqft
Front Porch 192 sqft
Side Porch 96 sqft
TOTAL 1344 sqft



NS2850

3 BEDROOM
2 1/2 BATH
GAME ROOM
COVERED PORCH

Living 1615 sqft
Front Porch 202 sqft
Back Porch 102 sqft
TOTAL 1919 sqft



NS3465

4 BEDROOM
2 1/2 BATH
COUNTRY PORCH

Living 2386 sqft
Front Porch 292 sqft
Back Porch 126 sqft
TOTAL 2804 sqft



Stronger · Safer · Smarter

The strength to weight ratio of steel is the highest in the home building industry. This is a distinct advantage, especially when there are extreme demands on structural engineering, like the high winds coming off the gulf coast.

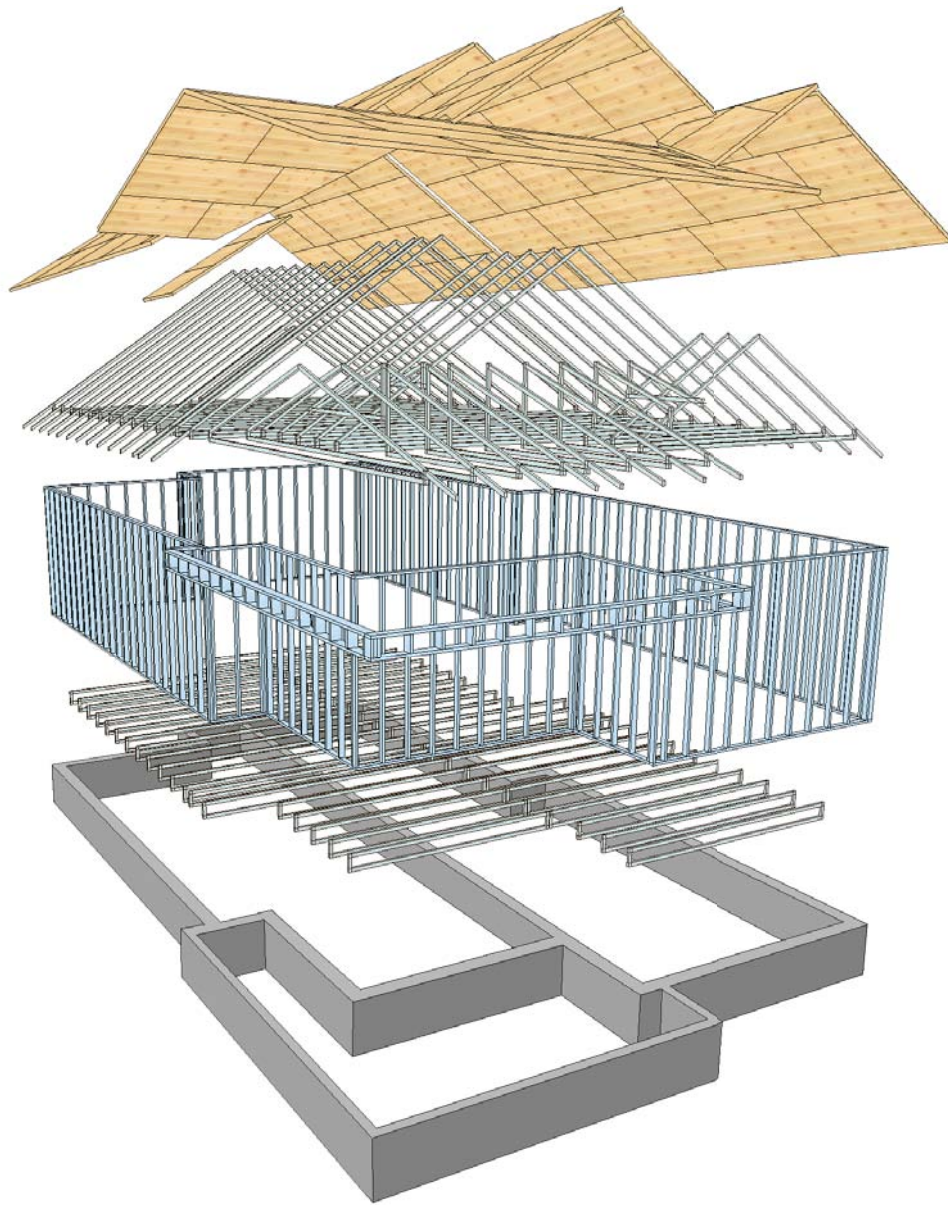


The **NUSHELTER** suite of products combine state-of-the-art design, engineering and layout software with rock-solid steel profiles. **NUCONSTEEL®** has performed all the extensive engineering required to simplify and minimize the amount of steel and labor needed to adequately frame each model and pass or exceed code requirements. With the extra wind load requirements of some areas in the Gulf Coast region these **NUSHELTER** homes come standard with either 110 mph or 150 mph wind loads .

NOTE: All measurements are approximate. Renderings are artist conceptions and may vary from actual plans. NUCONSTEEL reserves the right to modify and update plans without notice.

NUSHELTER®
A NUCONSTEEL PRODUCT

the **NU** way to build.



Become part of **NUCONSTEEL'S**[®]
Automated Framing Systems Network.
Call [1-866-873-4832](tel:1-866-873-4832) or visit nuconsteel.com today.